

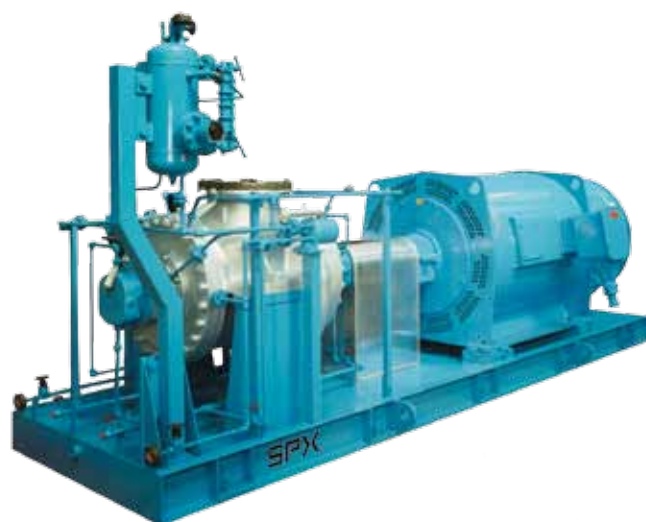
# CUP-BB2T

HEAVY DUTY, RADIALLY SPLIT, TWO STAGE PUMPS

## PUMP OVERVIEW

The ClydeUnion Pumps CUP-BB2T is a heavy duty, horizontal, two stage, radially split, between bearings, double suction pump available with top-top or side-side suction and discharge connections. The CUP-BB2T is designed and manufactured to the latest edition of API 610.

CUP-BB2T pumps are employed for many oil and gas, power, and general industrial applications. Stringent API noise and vibration limits are met due to a rigid pump body with 360° bearing support and heavy centreline mounting. Reliable operation at elevated temperatures is ensured due to a number of cooling methodologies complementing inherently cool running bearing modules. ClydeUnion Pumps legacy brands including HOL, KSMK and DB22 provide the industry with a very comprehensive hydraulic coverage.



## TYPICAL APPLICATIONS

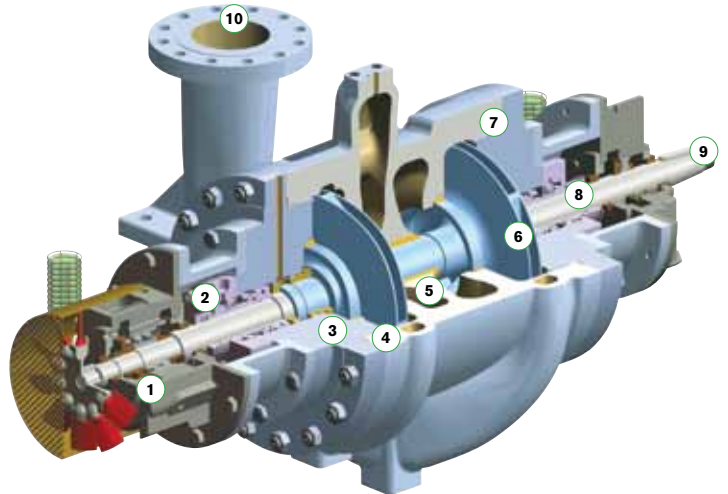
- Refinery processes
- Booster
- Boiler feed booster
- Upstream processes
- Gas processing
- Petrochemical
- Nuclear / conventional power

## TECHNICAL DATA

|                         |  |
|-------------------------|--|
| <b>Capacity:</b>        | up to 1,500 m <sup>3</sup> /hr / 6,600 USgpm |
| <b>Delivery head:</b>   | up to 700 m / 2,300 ft                       |
| <b>Temperature:</b>     | up to 427 °C / 800 °F                        |
| <b>Speeds:</b>          | up to 3,600 rpm                              |
| <b>Flange drilling:</b> | ANSI or BS                                   |

## FEATURES + BENEFITS

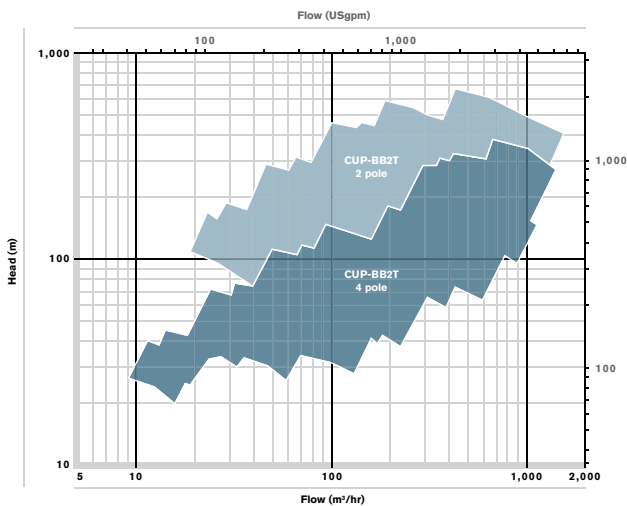
- 1 **Bearing assembly**  
360° mounting gives class leading vibration levels.  
High capacity fan as standard. Pure or purge mist options
- 2 **Seal chamber**  
API 682 compliant. Space for dual seals, easy access for maintenance and locking collar arrangement as standard
- 3 **Integral wear rings**  
Reduced risk of failure due to wear part displacement.  
Retro-fit with conventional rings when necessary, conventional options available
- 4 **Double volute design**  
Minimizes radial thrust loads for optimised bearing and seal life
- 5 **Case wear rings**  
Renewable case rings
- 6 **Impellers**  
Individually secured, precision cast
- 7 **Radially split casing**  
Hydraulic re-rates available within existing casings.  
Allows densities below 0.4 SG. Allows temperatures over 426°C (800°F)
- 8 **Robust rotor design**  
Stepped shaft for ease of assembly. Optimised rotor dynamics and power transmission capability



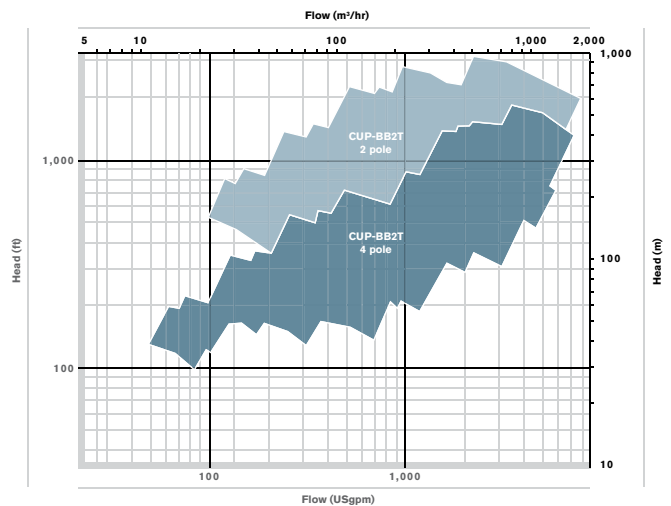
- 9 **API shaft taper**  
For easy coupling removal
- 10 **Flange finishes + rating**  
Heavy duty class 600 as standard. Higher pressure options available.  
Raised face and ring type joint options available

## RANGE COVERAGE CHARTS

50HZ RANGE CHART



60HZ RANGE CHART



These charts cover the standard pump range. Other engineering designs exist for extreme applications



92, Lot Mauritania - Zone Industrielle Bernoussi  
Casablanca MAROC 20590



[www.marocsealing.com](http://www.marocsealing.com)



[marocsealing@marocsealing.com](mailto:marocsealing@marocsealing.com)



(+212) 05 22 35 41 49/50



(+212) 05 22 35 41 52



+212 6 62 14 80 39



**Maroc Sealing**  
FLUID CONTROL