

## Description

Armstrong's AB-3500 Bimetallic Steam Trap operates by the effect that rising temperature has on bimetallic elements. It adjusts itself to changing conditions, as the increasing pressure on the valve is compensated by the curving of the bimetallic elements caused by the increasing temperature.

Armstrong's AB-3500 has a removable cap, stainless steel body that is lightweight, compact and highly resistant to corrosion. The AB-3500 is repairable (body and cap can be unscrewed). It is piped through the Armstrong 360° Universal Connector or Trap Valve Station (TVS). This makes it easy to install and replace, as the trap can be removed while the connector remains in-line. The result is savings in labor cost and an increase in flexibility, as other trap types (Inverted Bucket, Thermostatic and Thermodynamic) can be installed on the same connector.

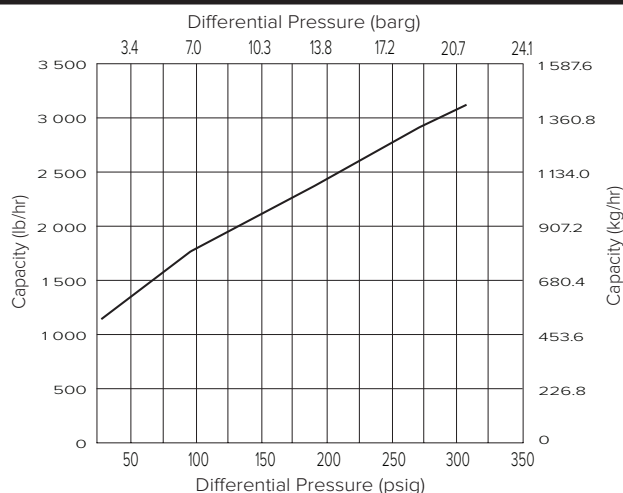
## Maximum Operating Conditions

Maximum allowable pressure  
(Vessel design): 465 Psig @ 500°F [32.0 barg @ 260°C]  
Maximum operating pressure: 320 Psig [22.0 barg]

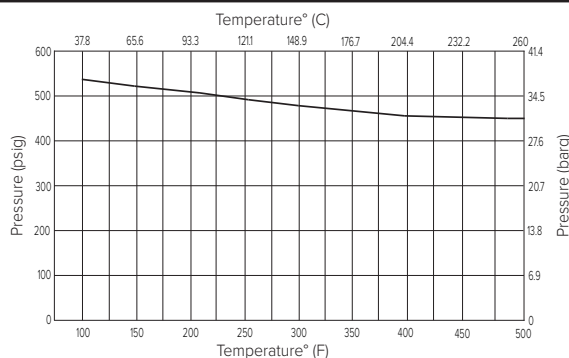
## Connector's Connection

Screwed BSPT and NPT  
Socket weld  
Flanged DIN or ANSI (welded)

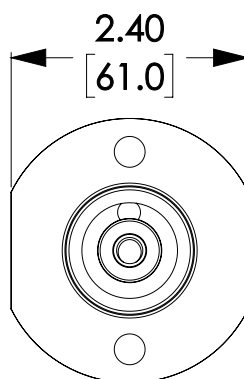
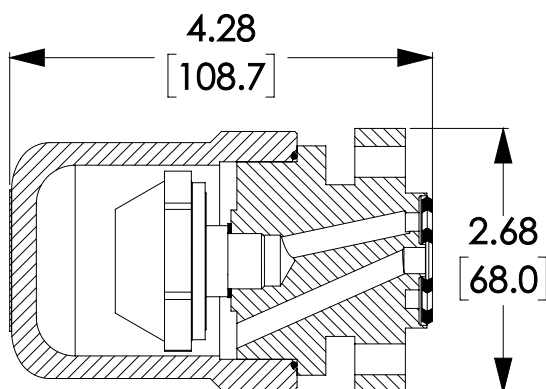
Model AB-3500 Cold Water Capacity



Model AB-3500 Pressure/Temperature Rating



Material	
Body and Cap	ASTM A-351 GR. CF8
IS-2 Connector	Stainless Steel - 304
Valve	Chrome Steel - 17-4 PH
Seat	304 Stainless Steel
Bimetallic Elements	Nickel Plated



## Description

Armstrong offers thermostatic wafer steam trap. The AW-3500 is an ideal for low-capacity steam tracers and features an exclusive non-welded wafer design. Choice of NPT or BSPT screwed connections.

Armstrong's AW-3500 has a removable cap, stainless steel body that is lightweight, compact and highly resistant to corrosion. The AW-3500 is repairable (body and cap can be unscrewed). It is piped through the Armstrong 360° Universal Connector or Trap Valve Station (TVS). This makes it easy to install and replace, as the trap can be removed while the connector remains in-line. The result is savings in labor cost and an increase in flexibility, as other trap types (Inverted Bucket, Thermostatic and Thermodynamic) can be installed on the same connector.

## Maximum Operating Conditions

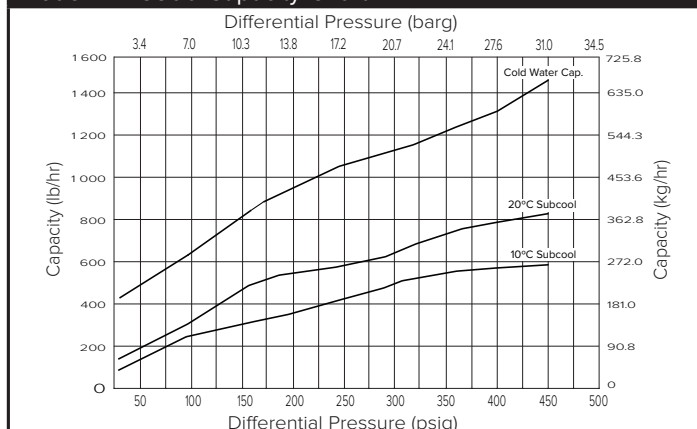
Maximum allowable pressure  
(Vessel design): 465 Psig @ 500°F [32.0 barg @ 260°C]  
Maximum operating pressure: 465 Psig [32.0 barg]

## Connector's Connection

Screwed BSPT and NPT  
Socket weld  
Flanged DIN or ANSI (welded)

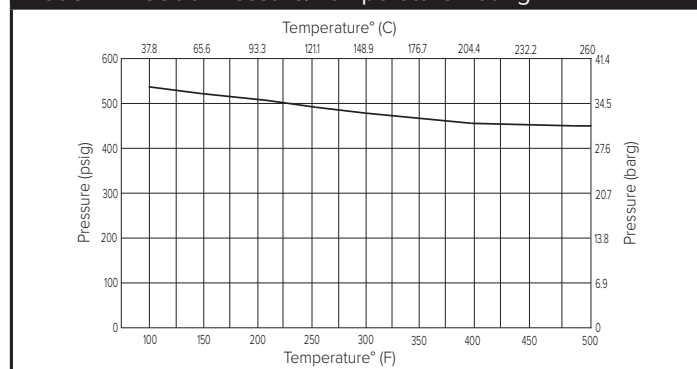
Material	
Body and Cap	ASTM A-351 GR. CF8
IS-2 Connector	Stainless Steel - 304
Capsure Body	Stainless Steel - 303
Capsule Wafer	Hastelloy
Capsule Cap	Stainless Steel - 303

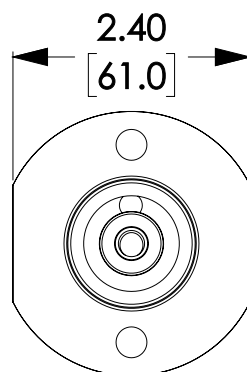
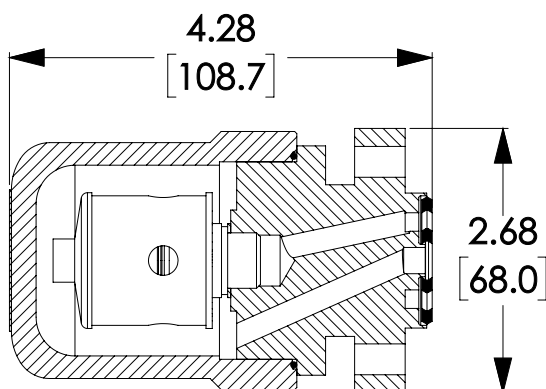
Model AW-3500 Capacity Chart



- Capacities based on differential pressure with no back pressure
- Capacities will vary with the degree of sub cooling. When greater capacities are required, the trap will automatically adjust to the load up to the maximum (cold water) capacity shown, by increasing the amount of sub cooling.

Model AW-3500 Pressure/Temperature Rating





## Description

Armstrong offers pressure balanced bellows thermostatic steam trap. Typical applications include jacketed kettles, retorts, vulcanizers, jacketed sterilizers or other contained equipment where air could accumulate in remote areas of the steam chamber and reduce heat transfer capacity. These vents are balanced pressure air vents that respond to the pressure-temperature curve of steam. Air is automatically vented at slightly below steam temperature throughout the entire operating pressure range.

Armstrong's AT-3500 has a removable cap, stainless steel body that is lightweight, compact and highly resistant to corrosion. The AT-3500 is repairable (body and cap can be unscrewed). It is piped through the Armstrong 360° Universal Connector or Trap Valve Station (TVS). This makes it easy to install and replace, as the trap can be removed while the connector remains in-line. The result is savings in labor cost and an increase in flexibility, as other trap types (Inverted Bucket, Thermostatic and Thermodynamic) can be installed on the same connector.

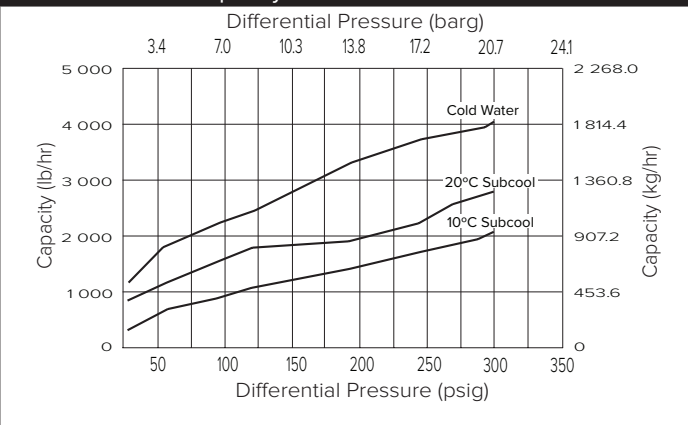
## Maximum Operating Conditions

Maximum allowable pressure  
(Vessel design): 465 Psig @ 500°F [32 barg @ 260°C]  
Maximum operating pressure: 300 Psig [20.6 barg]  
Maximum operating temperature bellows: 374°F [190°C]

## Connector's Connection

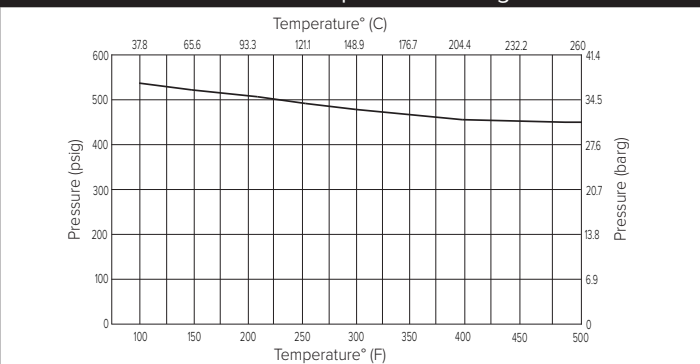
Screwed BSPT and NPT  
Socket weld  
Flanged DIN or ANSI (welded)

Model AT-3500 Capacity Chart



- Capacities based on differential pressure with no back pressure
- Capacities will vary with the degree of sub cooling. When greater capacities are required, the trap will automatically adjust to the load up to the maximum (cold water) capacity shown, by increasing the amount of sub cooling.

Model AT-3500 Pressure/Temperature Rating



## Material

Body and Cap	ASTM A-351 GR. CF8
IS-2 Connector	Stainless Steel - 304
Valve	Bronze
Seat	Stainless Steel
Thermostatic Bellows	Stainless Steel with Phosphor Bronze Bellows