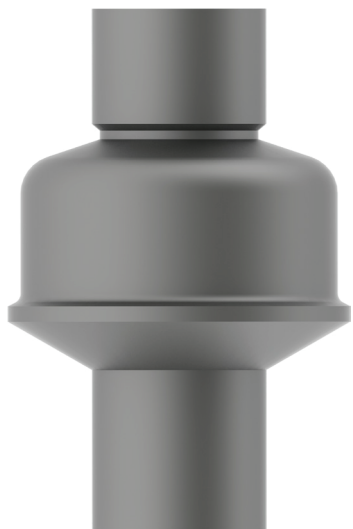


WMT-AB Bimetallic Steam Trap

Stainless Steel

For Pressures to 250 psig (17 barg)...Cold Water Start-Up Capacities to 2,850 lb/hr (1,292 kg/hr)



Model WMT-AB Trap

Description

The WMT-AB bimetallic traps are designed to last longer on light tracing loads than other oversized, all-purpose thermostatic and thermodynamic steam traps.

A water seal prevents loss of steam through the orifice of the WMT Series.

Adjusts automatically to flow rates, including start-up loads, at all pressures within its range.

Specification

Thermostatic bimetallic steam trap, type WMT-AB stainless steel.

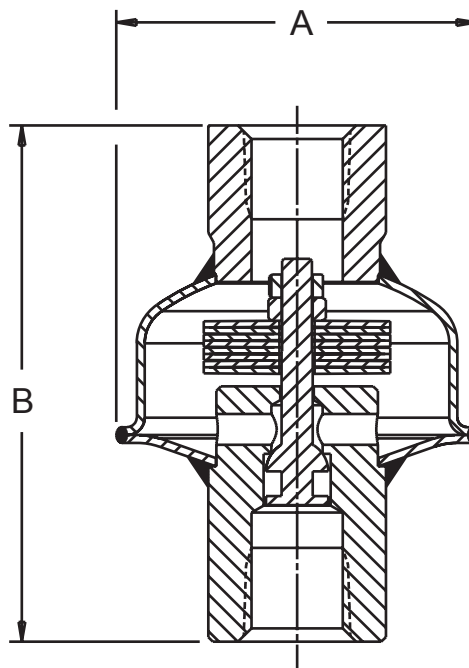
How to Order

- Specify model number
- Specify size and type of pipe connection.

Model WMT-AB Series Thermostatic Bimetallic Trap Capacity			
Differential Pressure		Cold Water Start-Up 70°F (21°C)	
psi	bar	lb/hr	kg/hr
5	0.35	400	183
10	0.70	570	258
20	1.4	800	365
30	2	980	448
40	3	1140	517
50	3.5	1270	578
75	5	1560	708
100	7	1800	817
150	10.5	2205	1000
200	14	2550	1156
250	17	2850	1292

WMT-AB Thermostatic Wafer Steam Trap				
Model No.	WMT-AB			
Pipe Connections	in	mm	in	mm
	3/8	10	1/2	15
"A" (Diameter)	2-1/4	57	2-1/4	57
"B" (Height)	3-5/16	84	3-5/16	84
Weight lb (kg)	1-1/4 (0.6)		1-1/4 (0.6)	

Model	WMT-AB
Connections	Screwed NPT
Material	
Cap and body	ASTM A240 Type 304L
Valve	Chrome Steel
Seat	ASTM A479 Type 304
Element	Nickel Plated
Maximum Operating Conditions	
Maximum allowable pressure (vessel design)	250 psig @ 406°F (1 barg @ 207°C)
Maximum operating pressure	250 psig (17 barg)



92, Lot Mauritania - Zone Industrielle Bernoussi
Casablanca MAROC 20590



www.marocsealing.com



marocsealing@marocsealing.com



(+212) 05 22 35 41 49/50



(+212) 05 22 35 41 52



+212 6 62 14 80 39



Maroc Sealing
FLUID CONTROL